

PS7391

CATHE HOLDEN'S



Christmas Faire

PROJECT PACK



moda
FABRICS + SUPPLIES®



©moda fabrics 2022 • all rights reserved



INCLUDES:

Reversible Wine Bag, Fabric Holiday Bowl, and Stuffed Christmas Tree

REVERSIBLE WINE BAG Approx. 6½" x 12"

SUPPLIES NEEDED:

- (2) Fat Quarters
- Decorative String/Ribbon/Cord for tie

1. Cut both FQ's to 13½" x 15½", making sure the top of any directional fabrics is at the 13½" side.
2. Layer cut fabric Right Sides Together, and stitch along the TOP 13½" edge. (Fig. 1)
3. Open up the joined panels, and re-fold longways Right Sides Together. Stitch along long side of joined panels to create a tube, making sure to leave approx. 2½" for turning. (Fig. 2)
4. Roll the tube fabric so that the long seam sewed in Step 3 is centered rather than at the side. Stitch along both short ends. Trim away 1¼" squares at each corner for base boxed corners. (Fig. 3)
5. Box the corners by pinching the trimmed corners so that the side seam & long edge seam meet, and there is a flat raw edge to sew. Stitch along the straight edge, and repeat for 3 remaining corners. (Fig. 4)
6. Turn tube right side out through opening in the long seam, and stitch closed by hand or machine. Push one section of the tube down inside the other to create the lining. Press seams.
7. Turn down approx. 3" at the top of the bag to create a cuff.
8. Place bottle in the bag, and tie string/ribbon/cord just below the cuff so you can see a hint of the bow underneath.



Wine bags turn any bottled beverage into a lovely gift!

moda

Fig.1



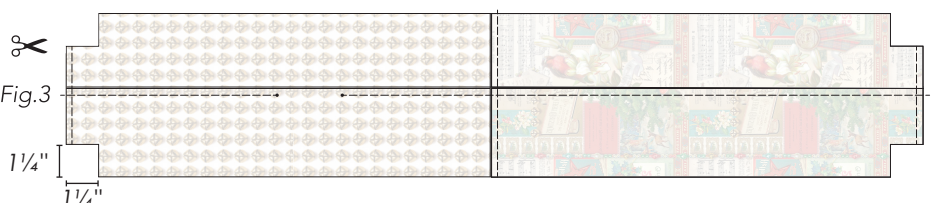
Fig.4



Fig.2



Fig.3



FABRIC HOLIDAY BOWL Approx. 10" x 3½"

SUPPLIES NEEDED:

- Charm Pack Christmas Faire + 1 Fat Quarter
- Heavyweight fusible, either 1 or 2 sided

1. Print two copies of the Holiday Bowl Template Sheet. From one sheet, cut out the black-line shapes for fabric, and on the other sheet, cut out the inner red-line shapes for interfacing. Use FABRIC templates to cut (2) base fabric pieces and (16) side fabric pieces. Use INTERFACING templates to cut (1) base piece, and (8) side pieces.

2. Press and fuse side panel interfacing pieces, centered, to the back side of 8 side panel fabric pieces. Also fuse the base interfacing piece centered to the base fabric.

3. Layer each fused fabric piece Right Sides Together with a non-fused fabric. Stitch around the edge of each set at ¼" seam allowance. Leave the bottom section of each side panel unstitched, and one side of the octagon base unstitched for turning. Clip the corners of the bottoms of each panel section at the bottom edge at seam (Fig. 1).

4. Turn all pieces right-side out, folding open ends inward ¼" and press well.

5. Using a sewing machine ladder stitch, sew each panel bottom to a side of the octagon, continuing the same stitch around until all panels are attached (Fig. 2).

6. Ladder-stitch the side edge of each side panel to the side edge of the next to create the bowl shape.

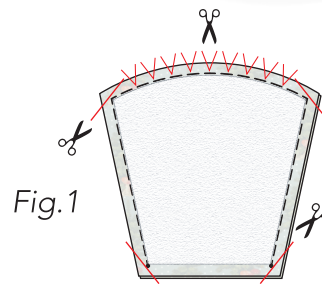


Fig. 1

moda

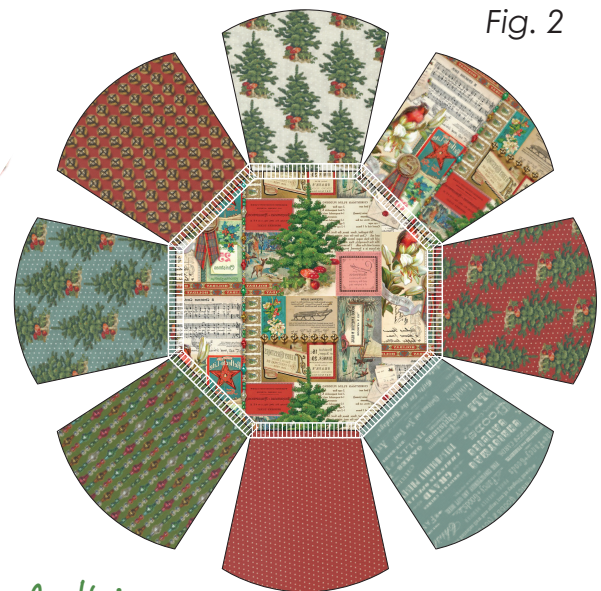


Fig. 2

Reminiscent of vintage crocheted-edge greeting card bowls, this finished project will become an adorable Christmas accent for holding greeting cards, ornaments, dinner breads and more!

STUFFED CHRISTMAS TREE Approx. 6" x 12"

Create soft holiday tabletop decor or a unique and whimsical accent pillow!

SUPPLIES NEEDED:



- 2 Fat Quarters (Stock #7396 13 & 7398 13)
- Fiber Fill or preferred filling
- Twine/string/ribbon for drawstring

Use a 1/4" seam allowance throughout.

1. Print or copy Stuffed Christmas Tree Template page sections, and cut out template sections. Piece together at red line with tape to create one long triangle template.
2. First, cut a 18½" x 5" rectangle from the 7398 13 Fat Quarter for the skirt/tree base. Then, using the template, cut two triangles each from your Fat Quarters for the tree sides, making sure to keep the directional fabric print the right way up.
3. Join the long edges of the triangles (Fig. 1), alternating fabric design, to create a 'cone.' Press seams open.
4. Join the two short ends of your skirt/tree base rectangle, Right Sides Together, to form a circle. Press seam open, then turn right side out.
5. Insert the tree skirt/base piece inside the cone, Right Sides Together, with raw edges aligned. Stitch around the full bottom of the cone to join the pieces.

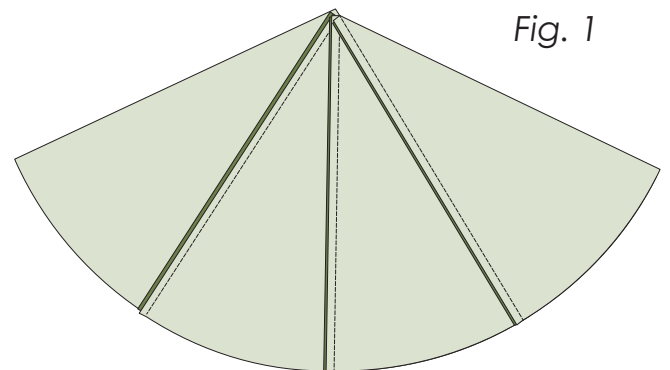


Fig. 1

STUFFED CHRISTMAS TREE (cont'd)

6. Fold over the bottom edge of the tree skirt/base by 1" and press. Create a channel for a drawstring closure by top stitching $\frac{1}{4}$ " from the fold and again $\frac{3}{4}$ " from the fold, leaving $\frac{1}{2}$ " in between (Fig 2).
7. Turn tree right side out, making sure to fully push out the point of the tree using a chopstick or bodkin.
8. Using thread snips or seam ripper, carefully remove the stitches in the tree skirt/base between the two sides of the top-stitched channel to create an opening for the drawstring (Fig. 3). Be careful to only remove the stitches on the EXTERIOR side of this seam. Thread a lace, ribbon, or string through the channel, leaving enough length to tie into a bow once the loop is cinched closed.
9. Stuff cone section with fiberfill or preferred filling. To make sure you have a nice point, start with a small pinch of filling and use a chopstick or bodkin to make sure it fills the point fully. Cinch the drawstring closed and tie a bow and press bottom (unstuffed) skirt upward to create a flat bottom for the tree.

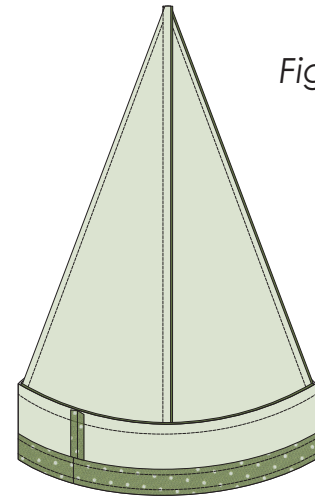


Fig. 2

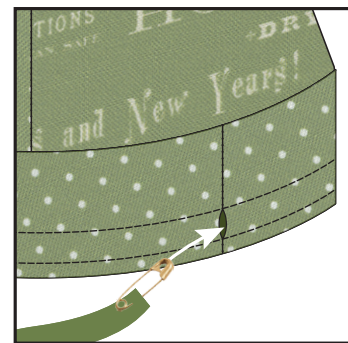


Fig. 3

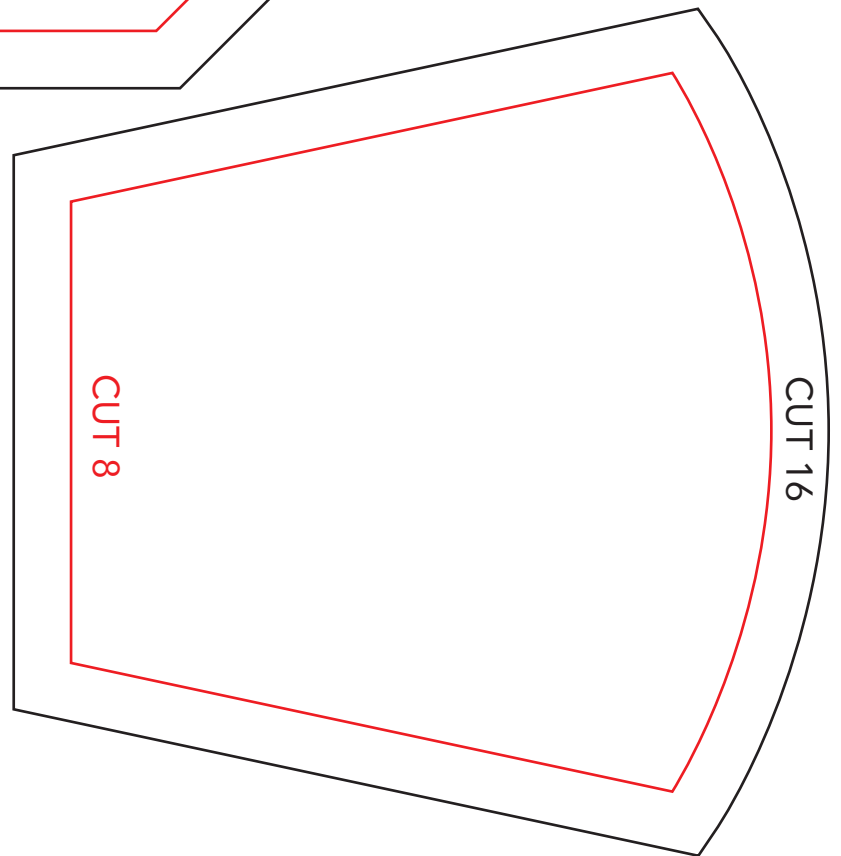
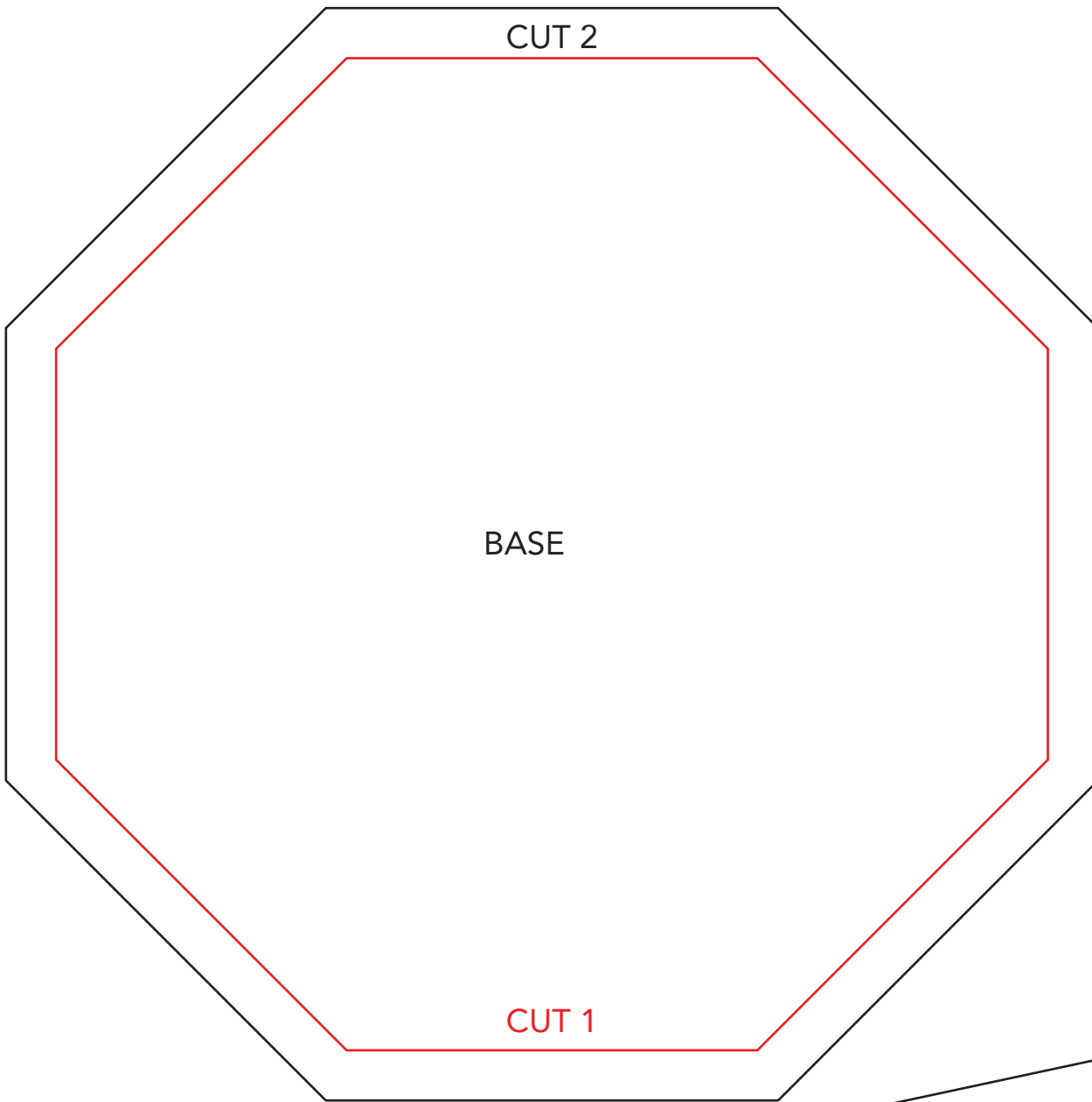
OPTIONAL TREE BASE IDEAS:

Attach a fabric-covered cylinder with adhesive; slide a large spool with a dowel attached up into the filling (as tree in photo); insert a stemmed glass inside the tree with the filling, cinch and tie the string below the bowl of the glass.

OPTIONAL DECORATION IDEAS:

Trim your tree with fabric covered buttons (with shank removed/snipped off), jingle bells, and other trinkets with fabric glue or hot glue as ornaments.

moda



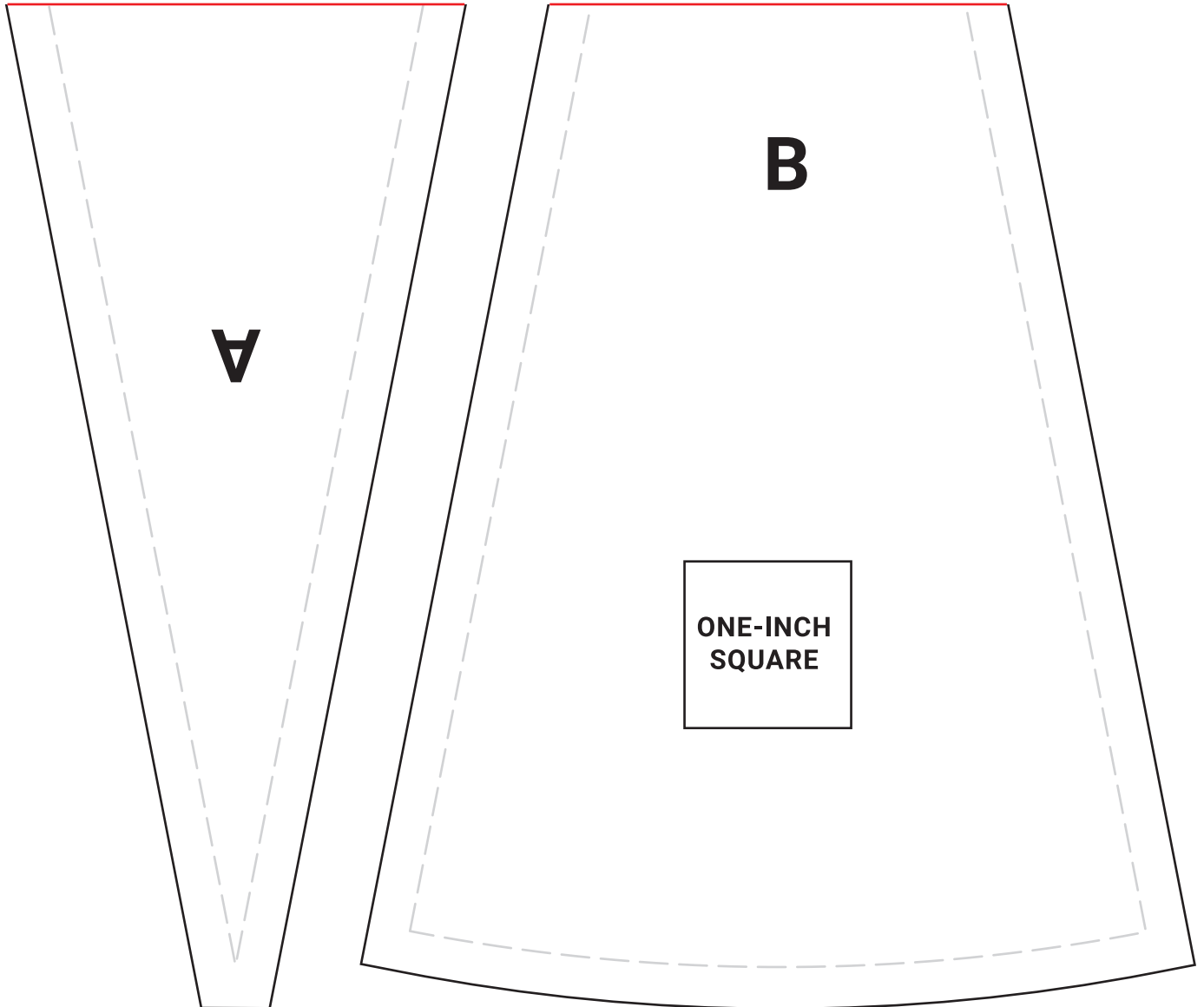
HOLIDAY BOWL TEMPLATES

Make (2) set of templates:

For Fabric Cutting use
BLACK outlines

For Interfacing Cutting use
RED outlines.

STUFFED CHRISTMAS TREE TEMPLATE
Join template sections along RED line.



PS7391

moda

CATHE HOLDEN'S



Christmas Faire

PROJECT PACK

SUPPLIES NEEDED:



REVERSIBLE WINE BAG

- (2) Fat Quarters
- Decorative String/
Ribbon/Cord for tie



HOLIDAY FABRIC BOWL

- Charm Pack Christmas
Faire + 1 Fat Quarter
- Heavyweight fusible,
either 1 or 2 sided



STUFFED CHRISTMAS TREE

- 2 Fat Quarters



- Fiber Fill or preferred filling
- Twine/string/ribbon for drawstring
- OPTIONAL: Tree base; Fabric
buttons or other decoration

INCLUDES:

Reversible Wine Bag,
Fabric Holiday Bowl, and
Stuffed Christmas Tree

Follow Cathe Holden
on Instagram
[@catheholden](#)
for more fabrics,
crafting, and vintage
inspiration.

#ChristmasFaireFabrics
#ModaFabrics

STOCK #PS7391

modafabrics.com



@modafabrics